

# **Bagworth Open Show**

## **Saturday 23rd August 2025**

### **Bagworth Community Centre**

- **The Twenty-first Annual Garden, Craft and Produce Show (with children's sections)**
  - **Classic Car Display**
  - **Emergency Services Displays**
  - **Craft and food stalls**
  - **Games for adults and children**
  - **Hot and cold food and drinks**



# PRESSCUT COMPONENTS

STATION ROAD • BAGWORTH • LEICESTERSHIRE • LE67 1BH

TELEPHONE: 01530 230220 FAX: 01530 230218

ISDN: 01530 230216 Email: [ianlander@btconnect.com](mailto:ianlander@btconnect.com)

PRESSCUT COMPONENTS are a company that specialises in cutting all types of materials producing shaped components varying in size from 12 mm diameter washers to intricately shaped panels 1.6 metres x 2.5 metres, in quantities from a hundred to hundreds of thousands.

As a matter of policy we have invested in the latest computer controlled equipment and are able to offer a first class professional cutting service which gives our customers the opportunity to take advantage of cost effective Hi-Tech manufacturing techniques without the burden of large capital outlays.

These components are produced from a variety of materials for many industries, i.e. hardboard teddy bears, tissue flowers and fur fabrics for the toy industry, fabric faced foam for jewellery displays, oiled manilla for stencils, cardboard facias for air filters, gaskets from all types of material, flexible printed circuits, aluminium foil heat insulators for boilers, vac form trimming from styrene P.V.C. etc. etc.



Press Cutting problems can be solved by ringing

**Presscut Components on 01530 230220**

whether they are for existing or proposed projects.

# **Twenty-first Bagworth Open Show Schedule Saturday August 23<sup>rd</sup> 2025 At the Bagworth Community Centre**

<b>Exhibits entered on Friday evening</b>	<b>6.30 – 7.30 pm</b>
<b>Exhibits entered on Saturday</b>	<b>8.00 – 10.30 am</b>
<b>Halls cleared for judging</b>	<b>11.15 am</b>
<b>Stalls Open</b>	<b>1.00 pm</b>
<b>Halls open for viewing after judging</b>	<b>about 2.00 pm</b>
<b>Presentation of trophies</b>	<b>3.45 pm</b>
<b>Auction</b>	<b>4.00 pm</b>
<b>Collection of prize money</b>	<b>4.30 pm</b>
<b>Raffle Draw</b>	<b>after auction</b>

# Bagworth Forward Group (BFG)

Bagworth Forward Group (BFG) - Who are we?

We are a Community Association consisting of a small group of Bagworth residents involved in various activities intended to enhance the life of the community.

Our current activities focus on:

Organising the Annual Village Show, this year will be the 21<sup>st</sup> organised by BFG but the tradition is much older.

Organising a Christmas Fayre at the Community Centre (with Santa in attendance).

Bagworth in Bloom. Organising and supporting the volunteers who care for the 30+ planters in the village. (We reimburse costs e.g. for compost and plants.)

Developing a history trail and website to make available the rich history of the village.

Working with the Parish Council to maintain the Bier House.

We would love to include more people in our work as.

Core members of BFG - coordinating the activities of the group. New ideas would be especially welcome. You would be very welcome to come to one of our monthly meetings at the Community Centre.

Event volunteers - especially the show.

Work with the History Trail group.

Planter carers - planting, watering weeding etc one or more planters. (We reimburse costs e.g. for compost and plants.)

**Sunday 23rd November. Christmas Fayre**  
**Santa will be visiting**

Look out for our adverts on posters around the village, and on Facebook.

Visit us on our Bagworth Forward Group Facebook page

# FitSteps with Irina

## *Strictly Fun FitSteps!*

FitSteps® is a Latin & Ballroom dance fitness workout where there is no partner required!



Book via Gymcatch: FitSteps with Irina

or



FitSteps with Irina



07808 661057



**Tue 19:00**

Hall Lane  
Methodist Church

**Wed 19:00**

Charles Booth Centre  
Thringstone

**Thu 10:10**

Swannington Village Hall

**Sat 9:40**

Bagworth Community Centre

## Bagworth Community Centre - Weekly Activities

Incy Wincy's Preschool, Laura, Monday to Friday 9am to 3.30pm

Dance-tastic, Jo, Monday 5.30pm to 8.30pm, Tuesday 6.00pm to 8.30pm, Wednesday 5.00pm to 8.30pm

Zen Goshin karate, Andy, Wednesday 5.30pm to 8.00pm, Thursday 5.15pm to 8.15pm

Sign and Rhyme, Marie, Wednesday 9.30am to 11.15am

Tea Dance, Stephen, 2.00pm to 4.00pm

Bridge, Carol, Thursday 1.00pm to 4.00pm

Singing Stars, Laura, Friday 5.30pm to 8.30pm

K9 Beginners, Shane, Friday 7.00pm to 8.00pm

Grace Davis, dance, Saturday mornings 9-12pm

Fit Steps - Dance Fitness Class, Irina, Saturday 9.30am to 10.30am

Learn to Cycle, Yasin, Sunday 1.00pm to 4.00pm

For further details regarding any of these classes, please contact Dominique on 01530 230628

## **Trophies and cups will be held for 12 months.**

Best in Show (the most aggregated points achieved by one entrant in all categories)

**Adrian Smith Trophy**

Best in Vegetable Section (the most aggregated points achieved by one entrant in the Vegetable Section)

**Tom Boulton Memorial Cup**

Best in Flower Section (the most aggregated points achieved by one entrant in the Flower Section)

**Thornton Nursery Trophy**

Best single entry in the Vegetable Section -

**Keith Orton Memorial Cup**

First prize in Class One Bagworth

**Allotment Society Produce Cup**

Best single entry in the Flower Section

**Markfield Plastics Cup**

Best Selection, Flower, Fruit, Vegetable

**M Price Selection Trophy**

Best single entry in the fruit section

**The Frank Gregory Trophy**

Best Artificial Flower Arrangement

**The Silk Forest Trophy**

Best Real Flower Arrangement

**Alderman Barber Trophy**

Best Park Lane allotment

**The Cliff Bateman Trophy**

### **Best Large and Best Small Front Garden**

Best in Cooking Section (the most aggregated points achieved by one entrant in the Homemade Preserves and Home Cooking Sections)

**The Bagworth Forward Group Trophy**

Best cake in the Show

**The Rosemary Smith Trophy**

Best single item in Cooking Section

**Poplar House Farm Trophy**

Best in Arts and Crafts Section (the most aggregated points achieved by one entrant in the Arts and Crafts Sections)

**The Bagworth Women's Institute Trophy**

Best single item in Craft Section

**The Graham Bellingham Trophy**

Best in Children's Section over 7 (the most aggregated points achieved by one entrant in the over 7 Children's Section.)

**The Marriott Trophy**

Best in Children's Section under 7 (the most aggregated points achieved by one entrant in the under 7 Children's Section.)

**The Bagworth Pre-school Trophy**

Best single item in the Children's Section, over 7

**Midland's Lifts Trophy**

Best single item in the Children's Section under 7

**Condor Hire Cars Trophy**

Best Preserve in Show

**Margaret Rhodes Memorial Trophy**





# Thursday Craft Club

All Welcome

Come and have a chat and bring your craft that you like to do.

£1.00 per person

Every Thursday 7PM—9PM at

**The Club, Bagworth** (Drinks available to purchase)

[facebook.com/thursdaycraftclub](https://facebook.com/thursdaycraftclub)

**SPRING CLEAN  
CARE SERVICES**

Carpet Cleaning	Garden Maintenance
Upholstery, Cars, Rugs, Caravans, Motorhomes	Planting, Lawn Mowing, Hedge Cutting, Weeding, Mole Problems

For All Those Jobs You Never  
Get Round To Doing

Give us a call  
**01530 231 928**  
**07717 232 992**

**Phil Durham**

# Schedule 2025

		Vegetables	1 <sup>st</sup>	2 <sup>nd</sup>	3 <sup>rd</sup>
Class 1	Selection of Vegetables grown on a Bagworth allotment	24" x 24" board, 4 items of vegetable or fruit, <u>amount as per schedule</u> eg. 6 beans, 2 leeks, 3 beetroot, 3 large onions.	£5 and a cup	£3	£2
Class 2	Onions	3 large onions (dressed)	£5	£3	£2
Class 3	Onions	3 (shown as grown), size unlimited	£5	£3	£2
Class 4	Onion	Single heaviest onion	£2	£1	50p
Class 5	Leeks	2 leeks	£2	£1	50p
Class 6	Cabbage	1 cabbage, any variety, at least 3" stalk	£2	£1	50p
Class 7	Shallots	6 large shallots	£2	£1	50p
Class 8	Tomatoes	6 tomatoes, same cultivar, calyces to be attached	£2	£1	50p
Class 9	Rhubarb	3 stalks	£2	£1	50p
Class 10	Runner beans	6 beans	£2	£1	50p
Class 11	Runner bean	Longest single runner bean	£2	£1	50p
Class 12	Beetroot	3 beetroot	£2	£1	50p
Class 13	Carrots	3 carrots, with foliage trimmed to 3"	£2	£1	50p
Class 14	Potatoes	4 potatoes, coloured, same cultivar (on a plate)	£2	£1	50p
Class 15	Potatoes	4 Potatoes, white, same cultivar (on a plate)	£2	£1	50p
Class 16	Potato	Heaviest single potato, any variety	£2	£1	50p
Class 17	Cucumbers	A pair of cucumbers	£2	£1	50p
Class 18	Cucumber	Longest single cucumber	£2	£1	50p
Class 19	Marrows	Two marrows	£2	£1	50p
Class 20	Peas	6 pods with stalks	£2	£1	50p
Class 21	Courgettes	3 Courgettes, size 10 - 20 cms	£2	£1	50p
Class 22	Chilli peppers	3 chilli peppers, same cultivar	£2	£1	50p
Class 23	Vegetable	Any vegetable not named in this schedule. Number: at least two.	£2	£1	50p
Class 24	Eggs	3 eggs, same colour, closed, on a plate	£2	£1	50p
Class 25	Mini Tray	See details in rules.	£5	£3	£2



# INCY WINCY'S PRESCHOOL

Bagworth Community Centre, LE67 1BH



**07931729367**

**Fully Qualified Staff**

**2, 3 & 4 year**

**Funding Available**

**LIMITED SPACES**

**Monday - Friday  
Mornings**

**9am-12pm**

**Afternoons**

**12:30pm - 3:30pm**

**Lunch Club**

**12-12:30pm**

**Indoor & Outdoor Play  
Every Day**



Incy Wincy's Preschool is a brand new Ofsted registered Preschool opening in Bagworth. We strive to provide children with endless opportunities to learn through play, whilst making friends and learning social skills. We will be following the EYFS statutory framework, helping to build the foundations for learning and preparing children for school.



**REGISTER NOW**

Contact us at: [incywincypreschool@outlook.com](mailto:incywincypreschool@outlook.com)

Or find us on Facebook -

Incy Wincy's Preschool - Bagworth



		<b>Fruit Section, all fruit to be displayed with stalks</b>			
<b>Class 26</b>	<b>Blackberries</b>	12 on a plate	£2	£1	50p
<b>Class 27</b>	<b>Raspberries</b>	12 on a plate	£2	£1	50p
<b>Class 28</b>	<b>Dessert Apples</b>	3 on a plate, the same variety	£2	£1	50p
<b>Class 29</b>	<b>Cooking Apples</b>	3 on a plate, the same variety	£2	£1	50p
<b>Class 30</b>	<b>Apple</b>	Single heaviest any variety	£2	£1	50p
<b>Class 31</b>	<b>Plums</b>	5 on a plate, all the same variety	£2	£1	50p
<b>Class 32</b>	<b>Fruit</b>	Any fruit not mentioned in the schedule. Number: at least two.	£2	£1	50p
		<b>Flower Section</b> <b>All flowers to be exhibited in vases.</b>			
<b>Class 33</b>	<b>Dahlias</b>	3 cacti	£2	£1	50p
<b>Class 34</b>	<b>Dahlias</b>	3 decorative	£2	£1	50p
<b>Class 35</b>	<b>Dahlias</b>	3 balls	£2	£1	50p
<b>Class 36</b>	<b>Dahlias</b>	3 pom poms,	£2	£1	50p
<b>Class 37</b>	<b>Dahlias</b>	5 mixed	£2	£1	50p
<b>Class 38</b>	<b>Gladiolus</b>	Single Gladiolus stem which may contain more than one flower	£2	£1	50p
<b>Class 39</b>	<b>Asters</b>	A vase of 6 Asters	£2	£1	50p
<b>Class 40</b>	<b>Sweet Peas</b>	A vase of 9 Sweet Peas	£2	£1	50p
<b>Class 41</b>	<b>Flower</b>	'The best cut flower in my garden' - this can be a flower stem containing more than one flower.	£2	£1	50p
<b>Class 42</b>	<b>Sunflower</b>	Largest single sunflower head, measured by circumference	£2	£1	50p
<b>Class 43</b>	<b>Pot plant</b>	Pot plant in flower, max 20 cms pot	£2	£1	50p
		<b>Flower Arrangements</b>			
<b>Class 44</b>	<b>Arrangement</b>	Any fresh flower arrangement	£2	£1	50p
<b>Class 45</b>	<b>Arrangement</b>	A small corsage or buttonhole of fresh flowers	£2	£1	50p

# **Bagworth Community Centre Zen Goshin Ryu Martial Art School**

**Specialising in**

- **Karate**
- **Ju Jutsu Self Defence**
- **Kickboxing**
- **Fitness training**

**Classes for students aged 5+  
No experience necessary**



*For more information call 07975 833078  
or email [karate1001@hotmail.com](mailto:karate1001@hotmail.com)  
[www.leicestermartialarts.co.uk](http://www.leicestermartialarts.co.uk)*

<b>Class 46</b>	<b>Arrangement</b>	Miniature exhibit of fresh flowers, not to exceed 10 cms in any direction.	<b>£2</b>	<b>£1</b>	<b>50p</b>
<b>Class 47</b>	<b>Arrangement</b>	A flower arrangement in a teapot	<b>£2</b>	<b>£1</b>	<b>50p</b>
<b>Class 48</b>	<b>Arrangement</b>	Green foliage arrangement	<b>£2</b>	<b>£1</b>	<b>50p</b>
<b>Class 49</b>	<b>Arrangement</b>	A foliage arrangement including flowers of only a white colour	<b>£2</b>	<b>£1</b>	<b>50p</b>
<b>Class 50</b>	<b>Arrangement</b>	An arrangement using edible herbs.	<b>£2</b>	<b>£1</b>	<b>50p</b>
<b>Class 51</b>	<b>Arrangement</b>	Any artificial flower arrangement	<b>£2</b>	<b>£1</b>	<b>50p</b>
<b>Class 52</b>	<b>Selection</b>	1 flower, 1 vegetable, 1 fruit	<b>£2</b>	<b>£1</b>	<b>50p</b>
		<b>Homemade Preserves Section.</b> <b>All homemade, all will be tasted</b> <b>(no advertising permitted on jars, bottles and lids, even when covered)</b>			
<b>Class 53</b>	<b>Jam</b>	A jar of jam, any kind	<b>£2</b>	<b>£1</b>	<b>50p</b>
<b>Class 54</b>	<b>Jelly</b>	A jar of jelly, any kind	<b>£2</b>	<b>£1</b>	<b>50p</b>
<b>Class 55</b>	<b>Marmalade</b>	A jar of marmalade, any kind	<b>£2</b>	<b>£1</b>	<b>50p</b>
<b>Class 56</b>	<b>Lemon curd</b>	A jar of lemon curd, no lid, just breathable cellophane	<b>£2</b>	<b>£1</b>	<b>50p</b>
<b>Class 57</b>	<b>Chutney</b>	A jar of chutney, any kind	<b>£2</b>	<b>£1</b>	<b>50p</b>
<b>Class 58</b>	<b>Piccalilli</b>	A jar of piccalilli	<b>£2</b>	<b>£1</b>	<b>50p</b>
<b>Class 59</b>	<b>Onions</b>	A jar of pickled onions	<b>£2</b>	<b>£1</b>	<b>50p</b>
		<b>Home Cooking Section.</b> <b>All homemade, all will be cut and tasted. No hot or warm entries will be accepted.</b>			
<b>Class 60</b>	<b>Scones</b>	4 scones, sweet or fruit, fluted cutters	<b>£2</b>	<b>£1</b>	<b>50p</b>
<b>Class 61</b>	<b>Scones</b>	4 scones, plain or savoury, plain cutters	<b>£2</b>	<b>£1</b>	<b>50p</b>
<b>Class 62</b>	<b>Cake</b>	Victoria Sandwich, raspberry jam filling only, own recipe	<b>£2</b>	<b>£1</b>	<b>50p</b>
<b>Class 63</b>	<b>Cake</b>	Chocolate cake, no filling, own recipe	<b>£2</b>	<b>£1</b>	<b>50p</b>
<b>Class 64</b>	<b>Cake</b>	Fruit Cake, own recipe,	<b>£2</b>	<b>£1</b>	<b>50p</b>





at Bagworth Community Centre.

## **Ballroom and Latin American dancing lessons for adults and children.**

Professionally qualified &  
affiliated to the NATD with over 35 years  
experience.

Group tuition or  
Private Lessons  
subject to  
availability.

Call Jo on 07790322486

## **Baby and toddler signing groups**



"I take my  
two year old and now my  
three month old to this  
vibrant interactive signing  
and singing class ... and cannot  
recommend it enough to  
any parent."  
*Abigail's and Evan's  
mum*

Signing is a fun and rewarding way to make the most  
of your baby's natural communication skills and  
support their language development.

- Relaxed, fun groups running at Bagworth  
Community Centre with a mix of signing, singing,  
musical activities and signed stories
- Five-week courses for babies aged 6 months to  
12 months
- 'Song in a Bag' weekly sessions for children from  
birth to five years

For more information and costs please contact  
Marie on 07710 217466 or visit Facebook  
@westleicestershire.



**SIGN & RHYME**

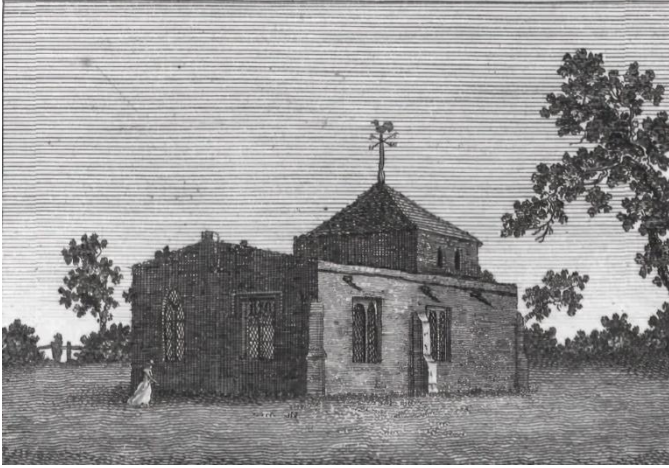
GIVING YOUR BABY A HAND

<b>Class 65</b>	<b>Cake</b>	Any other kind of large cake, own recipe	<b>£2</b>	<b>£1</b>	<b>50p</b>
<b>Class 66</b>	<b>Cake</b>	4 decorated cupcakes	<b>£2</b>	<b>£1</b>	<b>50p</b>
<b>Class 67</b>	<b>Biscuits</b>	4 shortbread biscuits, any type	<b>£2</b>	<b>£1</b>	<b>50p</b>
<b>Class 68</b>	<b>Bread</b>	A loaf of bread of any type	<b>£2</b>	<b>£1</b>	<b>50p</b>
<b>Class 69</b>	<b>Loaf</b>	Fruit loaf of any type	<b>£2</b>	<b>£1</b>	<b>50p</b>
<b>Class 70</b>	<b>Sausage rolls</b>	4 sausage rolls	<b>£2</b>	<b>£1</b>	<b>50p</b>
<b>Class 71</b>	<b>Tarts</b>	6 jam tarts, on a plate, wrapped.	<b>£2</b>	<b>£1</b>	<b>50p</b>
<b>Class 72</b>	<b>Pies</b>	1 fruit pie, pastry top and bottom	<b>£2</b>	<b>£1</b>	<b>50p</b>
		<b>Arts and Crafts section (No item can have been entered in a previous Show, and must have been made by you)</b>			
<b>Class 73</b>	<b>Picture</b>	A stitched picture	<b>£2</b>	<b>£1</b>	<b>50p</b>
<b>Class 74</b>	<b>Cushion</b>	A cushion	<b>£2</b>	<b>£1</b>	<b>50p</b>
<b>Class 75</b>	<b>Toy</b>	A child's soft toy or game	<b>£2</b>	<b>£1</b>	<b>50p</b>
<b>Class 76</b>	<b>Knitting</b>	A hand-knitted garment or other item	<b>£2</b>	<b>£1</b>	<b>50p</b>
<b>Class 77</b>	<b>Crafted Garment/item</b>	A hand-crafted garment or other item - not knitted	<b>£2</b>	<b>£1</b>	<b>50p</b>
<b>Class 78</b>	<b>Machine Sewing</b>	A machine sewn garment or other item	<b>£2</b>	<b>£1</b>	<b>50p</b>
<b>Class 79</b>	<b>Item</b>	An item in materials not otherwise listed in the schedule (eg metal, Perspex, glass, clay, mixed media etc)	<b>£2</b>	<b>£1</b>	<b>50p</b>
<b>Class 80</b>	<b>Garment/item - Recycled</b>	A garment or other item made from recycled materials or repurposed materials	<b>£2</b>	<b>£1</b>	<b>50p</b>
<b>Class 81</b>	<b>Wood</b>	An item in wood	<b>£2</b>	<b>£1</b>	<b>50p</b>
<b>Class 82</b>	<b>Photograph</b>	A recent photograph that you have taken, theme: 'Seasons' max size 7" x 5"	<b>£2</b>	<b>£1</b>	<b>50p</b>
<b>Class 83</b>	<b>Photograph</b>	A recent photograph of an animal that you have taken, max size 7" x 5"	<b>£2</b>	<b>£1</b>	<b>50p</b>
<b>Class 84</b>	<b>Photograph</b>	A recent photograph that you have taken, theme 'Selfie' max size 7" x 5"	<b>£2</b>	<b>£1</b>	<b>50p</b>
<b>Class 85</b>	<b>Photograph</b>	A recent photograph that you have taken, theme: 'Close up', max size 7" x 5"	<b>£2</b>	<b>£1</b>	<b>50p</b>
<b>Class 86</b>	<b>Painting</b>	A recent painting	<b>£2</b>	<b>£1</b>	<b>50p</b>
<b>Class 87</b>	<b>Greeting card</b>	A hand-made card for any occasion	<b>£2</b>	<b>£1</b>	<b>50p</b>
<b>Class 88</b>	<b>Limerick</b>	A limerick about Bagworth, first line: <b>"A Bagworth young women once prayed"</b>	<b>£2</b>	<b>£1</b>	<b>50p</b>



# Bagworth Village Trail

Bagworth has a long and rich history. It was one of the villages mentioned in the Domesday Book and appears on ancient maps. Over the years we have lost



many buildings and important landmarks, and we would like the history of the village and its people to be remembered. These include the Swannington line, one of the earliest steam railways to open in the world, which had a busy station in the village. Bagworth Colliery which closed in 1991 after 166 years of

production. The ancient Holy Rood church, and the school which dated from 1760, were lost to mining subsidence. At one time there were 28 shops and 3 pubs, all of which were lost with the economic decline of the village.

We are hoping to celebrate the rich history of Bagworth and its people by creating a trail with information boards at key points around the village.



If you would like to play an active part in this project we would welcome help. We would love to see any old photographs and hear any stories you may have.

Please contact us at one of our stalls at the Summer Show or email [r.a.jacobs@btinternet.com](mailto:r.a.jacobs@btinternet.com).

		<b>Children's Section (to be made by the child)</b>
<b>Class 88</b>	<b>Children</b>	A rainbow, any medium, age 7 years and under
<b>Class 89</b>	<b>Children</b>	A rainbow, any medium, age 8 to 12 years
<b>Class 90</b>	<b>Children</b>	A decorated cup-cake (cake may be bought or made by an adult), age 7 years and under
<b>Class 91</b>	<b>Children</b>	Large cake made and decorated by the child, age 8 to 12 years
<b>Class 92</b>	<b>Children</b>	Any 3D item (animal, pot, toy etc) in any medium (eg clay, fabric, wood, fimo etc), age 7 years and under
<b>Class 93</b>	<b>Children</b>	Any 3D item (animal, pot, toy etc) in any medium (eg clay, fabric, wood, fimo etc), age 8 to 12 years
<b>Class 94</b>	<b>Children</b>	A plant pot or jar decorated using any material (stickers, paint felt pen, fabric etc), age 7 years and under
<b>Class 95</b>	<b>Children</b>	A plant pot or jar decorated using any material (stickers, paint felt pen, fabric etc), age 8 to 12 years
<b>Class 96</b>	<b>Children</b>	A painted stone, age 7 years and under
<b>Class 97</b>	<b>Children</b>	A painted stone, age 8 to 12 years
<b>Class 98</b>	<b>Children</b>	A mini flower arrangement using real, artificial or home-made (felt, paper, Lego etc) flowers, age 7 years and under
<b>Class 99</b>	<b>Children</b>	A mini flower arrangement using real, artificial or home-made (felt, paper, Lego etc) flowers, age 8 to 12 years
<b>Class 100</b>	<b>Children</b>	A hand-made card, any occasion, age 7 years and under
<b>Class 101</b>	<b>Children</b>	A hand-made card, any occasion, age 8 to 12 years
<b>Class 102</b>	<b>Children</b>	A picture of 'My Family' in any medium, age 7 years and under
<b>Class 103</b>	<b>Children</b>	A picture of 'My Family' in any medium, age 8 to 12 years
<b>Class 104</b>	<b>Children</b>	Self-portrait, any medium, age 7 years and under
<b>Class 105</b>	<b>Children</b>	Self-portrait, any medium, age 8 to 12 years
<b>Class 106</b>	<b>Children</b>	Edible necklace, age 7 years and under
<b>Class 107</b>	<b>Children</b>	Edible necklace, age 8 to 12 years

#### **Rules:**

1. Only individuals, rather than couples or groups, are allowed to enter exhibits
2. All exhibits should be staged between the hours of 6.00 p.m. - 8.00 p.m. Friday and 8.00 a.m. to 10.30 a.m. Saturday. After this time the area must be cleared for judging. Judges and committee members only are allowed in the judging area when judging is taking place.
3. Exhibitors are only allowed to show exhibits which they have grown, made or produced.
4. Each exhibitor should complete an entry form which they will produce when paying for their entry.
5. Every exhibit must bear a ticket obtainable from the show secretary on the Friday and/or Saturday of the show.
6. Exhibitors must provide their own vases, plates, trays etc.
7. The committee cannot be held responsible for any article lost or damaged.
8. The judges' decisions will be final in all cases and they will have the power to disqualify any entry which does not comply with the schedule in their opinion.
9. Any exhibits not for sale must display a 'Not for Sale' notice. Such items must only be collected between 4.15 and 4.30 pm on the day of the show. The committee may agree

to declare the 'not for sale' sign null and void if exhibits remain after this set time.  
Exhibits in the Arts and Crafts section will not be sold.

10. Entry in the show signifies acceptance of the above rules.
11. The committee has the right to move any exhibits.
12. Any situation not covered by these rules will be decided by the Show Committee and will be final.
13. Entries will cost 25p per class entered, children free.
14. The judges and committee reserve the right not to present all prizes in the event of a low turnout in a particular section.
15. Anyone interfering with someone else's exhibit will be disqualified and asked to leave the exhibition area.
16. An exhibit that has been shown at a previous Bagworth Show cannot be used in this year's show.
17. Mini Tray rules must be followed.
18. The judges will have the power to disqualify any entry which does not comply with the rules in their opinion.
19. Where appropriate exhibits will be judged to RHS standards.

Advice to new exhibitors:

- Ensure that your produce is in good condition
- Where sets are asked for, e.g. potatoes, uniformity is very important.
- All vegetables to be shown clean and washed unless stated otherwise. Use a soft cloth and plenty of water.

## Mini Tray Rules

1. The Mini Tray class is for a collection of three types of vegetables taken from the following list of six. The quantity of each vegetable is given in brackets and each type must consist of the same variety: Tomatoes (6), Onions (3), Carrots (3), Peas (6), Runner Beans (3 pods), Potatoes (3). Each type of vegetable will be judged out of a total of 20 points. This is split into three sections as follows: 7 points for size, shape and colour; 7 points for condition; 6 points for uniformity. The overall mark will therefore be out of a total of 60.

2. All vegetables are to be displayed for effect. The vegetables must be displayed within an area measuring 36 cms by 25.5 cms (14 in by 10 in), without bending any part of them. No part of any exhibit may exceed the size of the tray. A tray or board measuring 36 cms by 25.5 cms (14 in by 10 in) can be used to display the vegetables, or the area can simply be marked on the staging. Where a tray has a lip or edge, it is the internal measurements that must not exceed 36 cms by 25.5 cms (14 in by 10 in).

3. A black cloth is permitted, and the tray may be painted. Parsley is allowed for garnishing, but no other foliage or accessories, such as plates, sand or rings will be allowed. Onion tops may be tied or whipped using raffia or string.

## Notes for Exhibitors and Judges

- Carrots must have foliage trimmed back to 2.5 cms (1 in).
- Peas and beans must be displayed with some stalk attached.
- Tomatoes must be displayed with calyces (the green flower-bud case).
- Judges may handle exhibits, open pods and so on, to check for quality.
- The tray, board or staging must not be cut or mutilated in any way at all - such as cutting holes for standing onions in.
- Judges should use their discretion when judging the Mini Tray class, bearing in mind that entries may come from fairly inexperienced exhibitors.
- Any queries that may arise, regarding anything other than the above rules, should be referred to, and decided by the show officials.
- Failure to abide by any of these rules will lead to disqualification.

**We would like to thank the  
businesses that have supported us in  
the last year.**

- MQP (Midland Quarry Products)
- Liss Sports Ltd. Newbold Verdon
  - Presscut Components
  - Asda
  - Aggregate Industries

We would also like to thank everyone  
that has sponsored show classes (these  
are shown on show tables with exhibits)  
and all of our advertisers.

	<b>Class No</b>	<b>Category</b>	<b>Entries per class</b>
<b>13</b>			
<b>14</b>			
<b>15</b>			
<b>16</b>			
<b>17</b>			
<b>18</b>			
<b>19</b>			
<b>20</b>			
<b>21</b>			
<b>22</b>			
<b>23</b>			
<b>24</b>			
<b>25</b>			
<b>26</b>			
<b>27</b>			
<b>28</b>			
<b>29</b>			
<b>30</b>			
<b>31</b>			
<b>32</b>			
<b>33</b>			
<b>34</b>			
<b>35</b>			
<b>36</b>			

# Entry Form Bagworth Show 2025

Your name \_\_\_\_\_

Address \_\_\_\_\_

Post Code \_\_\_\_\_

Phone number \_\_\_\_\_

Email \_\_\_\_\_

We would like to use email to let you know about our events.

Tick the box if you do not want to receive emails.

☐

	<b>Class No.</b>	<b>Category</b>	<b>Entries per class</b>
<b>1</b>			
<b>2</b>			
<b>3</b>			
<b>4</b>			
<b>5</b>			
<b>6</b>			
<b>7</b>			
<b>8</b>			
<b>9</b>			
<b>10</b>			
<b>11</b>			
<b>12</b>			
<b>Please continue overleaf or on paper if necessary</b>			
<b>Total number of entries</b>			